

Datasheet

(GL-AP1300 / GL-AP1300LTE)

Meet Cirrus

- Ceiling Wireless Access Point



Cirrus is a powerful dual-band Wi-Fi access point offering 400Mbps (2.4GHz) + 867Mbps (5GHz) Combined Wi-Fi Speed. It can be conveniently powered by PoE, deployed using a wall mount designed for office installation, and includes a hardware watchdog timer for reliable performance. Cirrus is perfect for deployment in mass quantities within large offices with multiple floors, or shopping malls that offer public Wi-Fi services in a large area.

Cirrus has a standard GL-AP1300 version and a GL-AP1300LTE version that includes a 4G LTE module for cellular network and two external antennas for extended range and improved wall penetration capabilities.

Highlights

Surface Mount for Walls and Ceilings

Cirrus's mounting platform has screw slots for fixing the mount into the wall or ceiling in an office environment, conveniently deploy Cirrus by sliding the device into the wall mount or detach by sliding out the device.

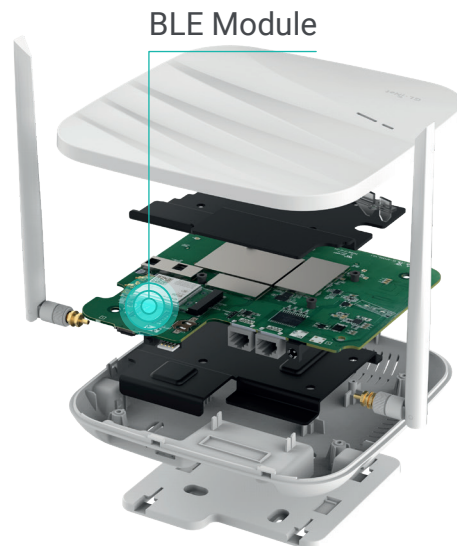


Mass Device Connectivity MU-MIMO Technology

Cirrus comes with MU-MIMO. It processes multiple data streams from client devices simultaneously, instead of queuing network traffic into one data stream, reducing the queuing delay in high density networks.

BLE Module

Cirrus includes a BLE module that supports office and shopping mall devices for a wide range of applications including equipment management, HVAC configuration, and indoor location tracking applications.



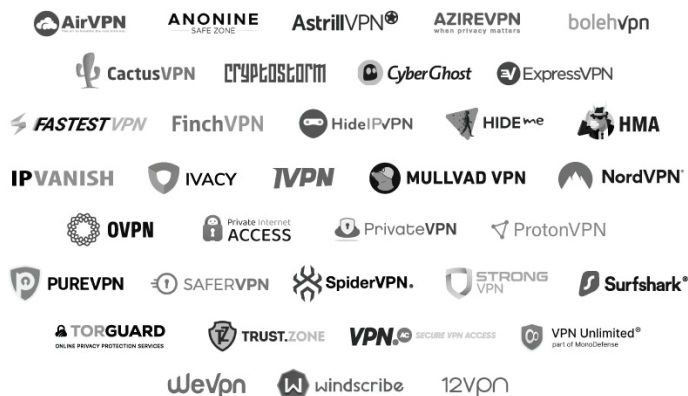
Remote Device Management

Cirrus comes with GoodCloud, our remote device management platform for remote monitoring client device data usage, accessing the device's terminal, batch update, view analytics, and more.



Secured Network

Cirrus is pre-installed with OpenVPN and WireGuard supporting 30+ VPN services, it supports VPN remote access to client devices using GoodCloud, and automatically encrypts all network traffic within the connected network. The network runs on the latest version of Internet Protocol IPv6, and It also supports Cloudflare DNS over TLS security protocol, ensuring a secure network.



Specifications

HARDWARE	GL-AP1300	GL-AP1300LTE
CPU	Qualcomm Quad-Core IPQ4018, 717MHz	
Memory / Storage	DDR3L 256MB / NOR Flash 4MB + NAND Flash 128MB	
Wi-Fi	802.11 b/g/n, 300Mbps (2.4GHz) 802.11 ac, 867Mbps (5GHz)	
4G Module	/	CAT4 / CAT6
BLE Module	Siliconlabs EFR32MG21	
Hardware Watchdog	Internal Watchdog Chipset	
Internal Antennas	2 x 2.4GHz & 5GHz Antennas	
External Antennas	/	2 x Detachable 4G Antennas
Ethernet Speed	10/100/1000 Mbps	
Power Consumption	<10W	
Dimension / Weight	200 x 200 x 40 mm (L*W*H), (Excluding external antennas and wall mount kit) / 650g	

SOFTWARE FEATURES	GL-AP1300	GL-AP1300LTE
Operating System	OpenWrt	
Network mode	Routing, AP, Extender, Wireless Bridge, Wired Bridge	
Ethernet Dialing Mode	DHCP, Static, PPPoE, 4G dialing	
Repeater Mode	Scans and connects to SSID Connects to hidden SSID	

4G Modem	/	Automatic / Manual setting Sets AT command Receives SMS Display signal strength
BLE	Scans and receives BLE broadcasting signals	
Wireless Configuration	Switching on and off wireless AP Modifying and hiding SSID Modifying encryption mode and password Channel modification Bandwidth modification Modifying transmission power Guest SSID	
Display Flow Statistics (Cloud Platform Required)	Display product model, name, IP address, MAC address Flow statistics QoS settings	
Client List	Show current connected clients Disable a client (no internet access)	
Firewall Function	Port forwarding, open port, DMZ	
VPN	OpenVPN client & server WireGuard client & server Maximum OpenVPN Speed: 25Mbps Maximum WireGuard Speed: 192Mbps Policy routing	

System Function

Restart

Restore factory settings

Change IP address range on LAN side

Change time zone

MAC address clone

Advanced DNS

Cloud remote management

Remote web management

Remote SSH management

Installing / uninstalling packages

INTERFACE**Ethernet Port**

1 x WAN, 1 x LAN

SIM Card Slot

/

Nano SIM card
(12.3mm x 8.8mm)

LED Indicator

Power

Power / 4G

Reset Button

Press (>3s, <8s) restores network settings to device initial state

Long press (>=8s) restores factory settings

Power Port

DC5521, 12V/1.5A (55*21*11mm) / 802.3at POE-IN

CERTIFICATION

- CE
- FCC
- RoHs

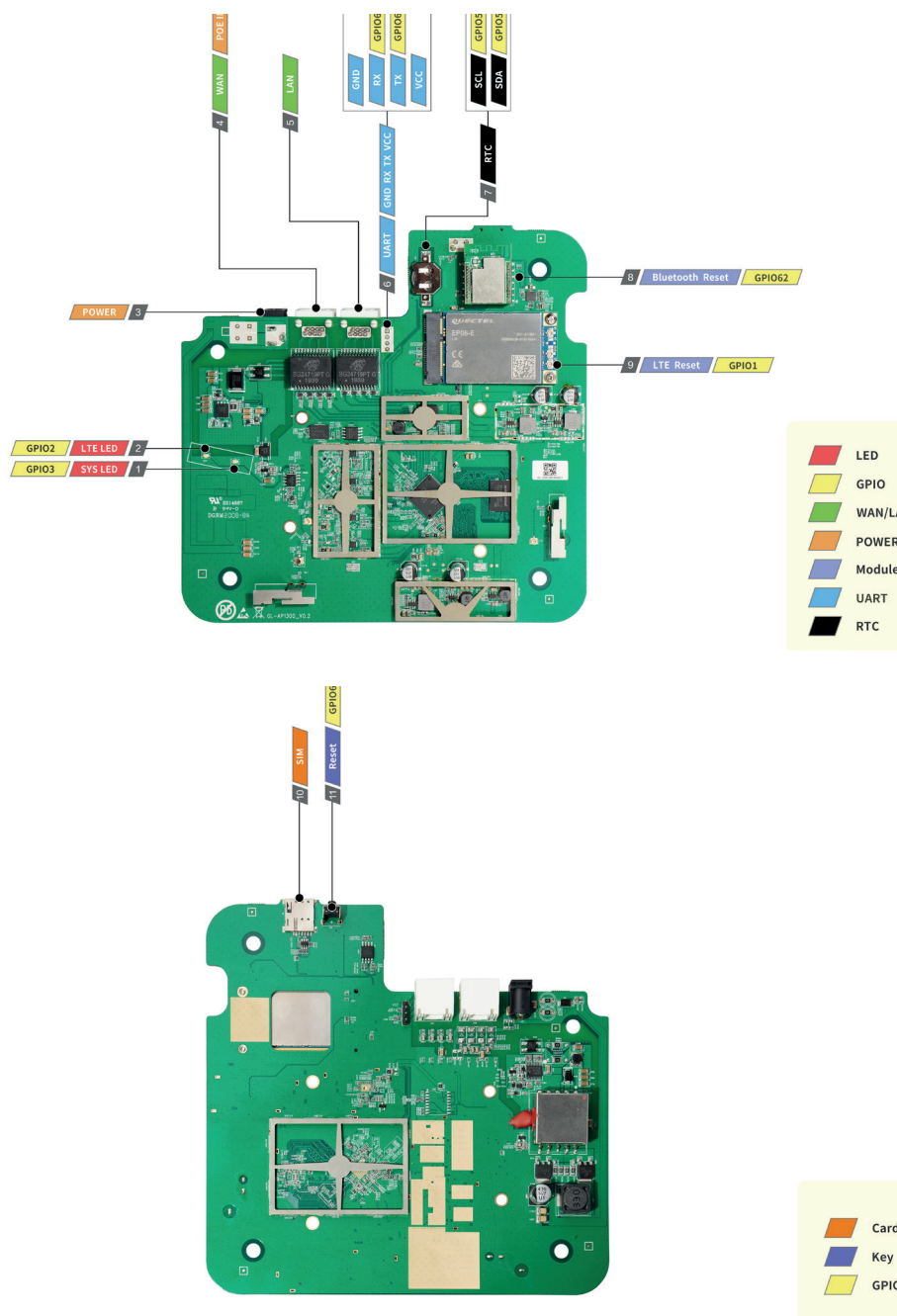
ENVIRONMENT

Operating Temperature	0 ~ 40°C (32 ~ 104°F)
Storage Temperature	-20 ~ 70°C (-4 ~ 158°F)
Operating Humidity	5%~95%, non-condensing
Storage Humidity	5%~95%, non-condensing

PACKAGE LIST**GL-AP1300****GL-AP1300LTE**

1 x Cirrus (GL-AP1300) Router	1 x Cirrus (GL-AP1300LTE) Router
1 x Power Adapter	1 x Power Adapter
1 x Wall-mount Kit	2 x External Antennas
1 x Ethernet Cable	1 x Wall-mount Kit
1 x Positioning Sticker	1 x Ethernet Cable
1 x Installation Guide	1 x Positioning Sticker
1 x User Guide & Warranty Card	1 x Installation Guide
	1 x User Guide & Warranty Card

PINOUT



CONTACT US

GL TECHNOLOGIES (HONG KONG) LIMITED

Unit 601, Building 5W, Hong Kong Science Park, Shatin, N.T., Hong Kong

WEBSITE www.gl-inet.com

E-MAIL sales@gl-inet.com