

Datasheet (GL-E750)

Meet Mudi

- Cellular Portable Privacy Router

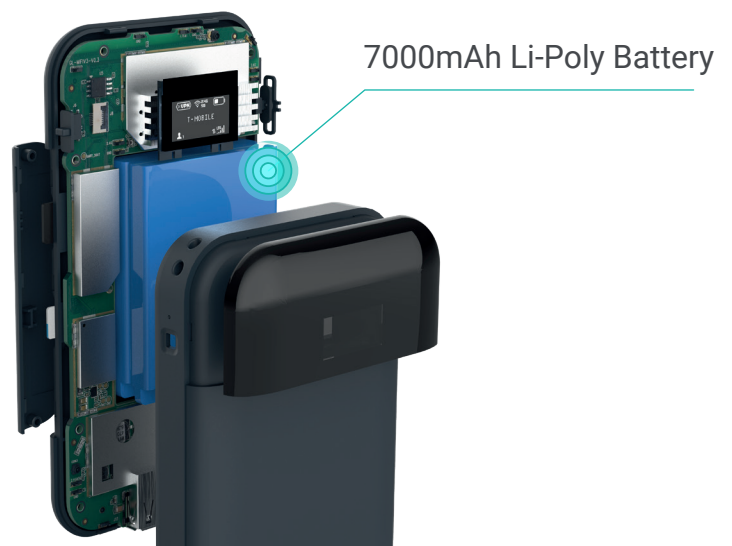


Mudi (GL-E750) is a pocket Wi-Fi device offering 300Mbps (2.4GHz) + 433Mbps (5GHz) combined Wi-Fi Speed. It has an ultra-high capacity 7000 mAh rechargeable battery for long term portable use, and is also equipped with a BLE module for industrial field devices and equipment. Mudi is convenient for long periods of portable use during travels, or serves as a network encryption router for all connected devices using pre-installed VPN supporting 30+ VPN services.

Highlights

Ultra-high Capacity Battery

Mudi has a built-in 7000 mAh rechargeable lithium polymer battery, it has a high energy density while maintaining a lightweight and small size. The battery has a long life cycle without a battery memory effect that reduces its lifespan.



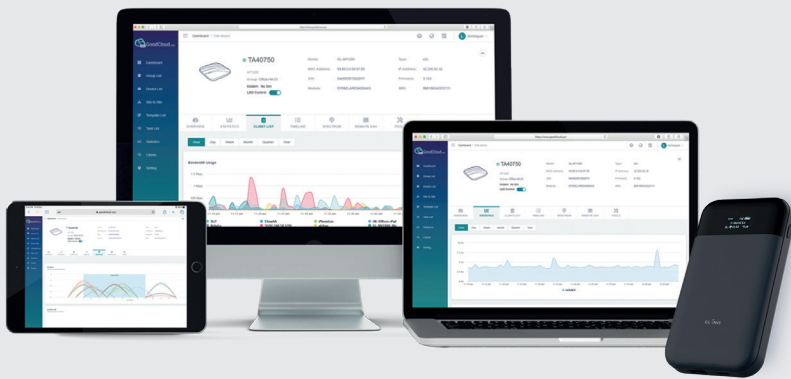
Custom IoT Solution

The Mudi (GL-E750) offers seamless integration with IoT modules, primarily available for bulk orders. This device is designed to be customizable, allowing clients to tailor it to their specific needs by choosing from various connectivity options, including BLE, ZigBee, or lightning-fast 5G Wi-Fi. This adaptability makes the Mudi an excellent choice for businesses and developers looking to build IoT solutions tailored to their specific use cases.



Remote Device Management

Mudi comes with GoodCloud, our remote device management platform for remote monitoring client device data usage, accessing the device's terminal, batch update, view analytics, and more.



Secured Network

Mudi is pre-installed with OpenVPN and WireGuard supporting 30+ VPN services, it supports VPN remote access to client devices using GoodCloud, and automatically encrypts all network traffic within the connected network. The network runs on the latest version of Internet Protocol IPv6, and it also supports Cloudflare DNS over TLS security protocol, ensuring a secure network.



Specifications

HARDWARE

CPU	Qualcomm QCA9531, @650MHz
Memory / Storage	DDR2 128 MB / NOR Flash 16MB + NAND Flash 128 MB
Wi-Fi	802.11 a/b/g/n, 300Mbps (2.4GHz) 802.11 ac, 433Mbps (5GHz)
4G Module	CAT4 / CAT6
BLE Module	Siliconlabs EFR32MG21
Internal Antennas	2 x full-band antenna
Ethernet Speed	10/100/1000Mbps
Power Consumption	Operating at full capacity: <6W (excluding USB external devices)
Battery	Built-in 7000mAh rechargeable lithium polymer battery
Dimension / Weight	Router: 145 x 77.5 x 23.5 mm (L*W*H) / 300g Docking station: 50.8 x 40 x 17.3 mm (L*W*H)

SOFTWARE FEATURES

Operating System	OpenWrt
Network mode	Routing, AP, Wireless Bridge, Wired Bridge
Ethernet Dialing Mode	DHCP, Static, PPPoE
Repeater Mode	Scans and connects to SSID Connects to hidden SSID

4G Modem	Automatic / Manual setting Sets AT command Receives SMS Display signal strength
BLE	Scans and receives BLE broadcasting signals
Wireless Configuration	Switching on and off wireless AP Modifying and hiding SSID Modifying encryption mode and password Channel modification Bandwidth modification Modifying transmission power Guest SSID
VPN	OpenVPN client & server WireGuard client & server Maximum OpenVPN Speed: 10Mbps Maximum WireGuard Speed: 50Mbps Policy routing
System Function	Restart Restore factory settings Change IP address range on LAN side Change time zone MAC address clone Advanced DNS Cloud remote management Remote web management Remote SSH management Installing / uninstalling packages

INTERFACE

Ethernet Port	1 x LAN or WAN (Ethernet Port Dock)
SD Card Slot	TF card, maximum 512 GB
SIM Card Slot	Nano SIM card, and optional e-SIM
USB Port	USB2.0 Type-A
Display Screen	0.96 inch monochrome OLED display
Reset Button	Long press (>=8s) restores factory settings
Power Port	USB Type-C interface, 5V/2A power supply

CERTIFICATION

- CE
- FCC

ENVIRONMENT

Operating Temperature	0~35°C (32 ~ 95°F)
Storage Temperature	-20~45°C (-4 ~ 113°F)
Operating Humidity	5%~95%, non-condensing
Storage Humidity	5%~95%, non-condensing

PACKAGE LIST

- 1 x Mudi (GL-E750) Router
- 1 x Power adapter
- 1x USB cable (Type-A <-> Type-C)
- 1 x USB cable (Type-C <-> Type-C)
- 1 x Ethernet port dock
- 1 x Ethernet Cable
- 1 x Warranty Card
- 1 x User Manual

CONTACT US

GL TECHNOLOGIES (HONG KONG) LIMITED

Unit 601, Building 5W, Hong Kong Science Park, Shatin, N.T., Hong Kong

WEBSITE www.gl-inet.com | E-MAIL sales@gl-inet.com