

Datasheet (GL-MT6000)

Meet Flint 2

Wi-Fi 6 High-Performance VPN Router



Introducing the Flint 2 (GL-MT6000) Wi-Fi 6 VPN Router - a powerhouse for high-performance networking. Ideal for homes and offices, it's built to handle heavy data loads, connect multiple devices, and deliver ultra-low gaming latency.

The Flint 2 offers blazing-fast WireGuard VPN speeds of up to 900Mbps. Safeguard your online activities and establish secure remote access effortlessly. Enjoy Wi-Fi 6 speeds of up to 1148 Mbps (2.4GHz) and 4804 Mbps (5GHz). Stream 4K content, game without lag, and download files in an instant. Experience network reliability like never before with Multi-WAN, Load-balancing, and Failover features. Your connection stays strong, no matter what. The modern design seamlessly fits your environment, while the user-friendly interface ensures hassle-free setup. Elevate your online experience with the Flint 2 (GL-MT6000) Wi-Fi 6 VPN Router. Get high-speed, secure, and uninterrupted connectivity for work and play.

Highlights

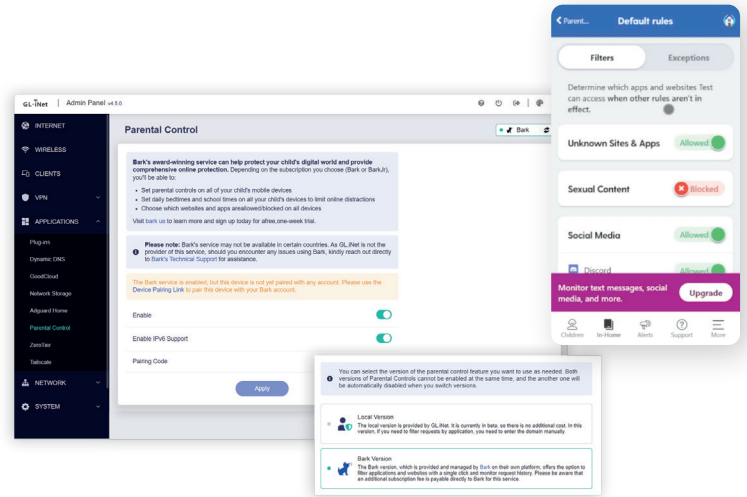
Ultra-Fast VPN Encryption

Flint 2 (GL-MT6000) is pre-installed with OpenVPN (Maximum 880Mbps, with DCO support) and WireGuard® (Maximum 900Mbps) supporting 30+ VPN services. It automatically encrypts all network traffic within the connected network, including guest devices and client devices that are not capable of running VPN encryption. Flint 2 can also act as a VPN server, redirecting traffic from client devices in remote locations to the VPN server via a VPN tunnel before accessing the public internet.



Empower Your Parenting with Flint 2

Flint 2 (GL-MT6000) offers robust support for Bark's parental control feature, empowering users to effectively manage content and schedule screen time. With unparalleled coverage, Bark on the MT6000 delivers essential functions such as screen time management and website filtering, empowering parents to safeguard their children's online experiences.



Elevate Your Connectivity

Flint 2 packs six Ethernet ports, including two blazing-fast 2.5G ports, and a USB 3.0 port for rapid data handling. One Ethernet port on Flint 2 is designed to be adaptable, seamlessly switching between WAN and LAN modes. This feature is invaluable for businesses that require flexibility in their network setup, ensuring optimal connectivity at all times.

Specifications

| HARDWARE | |
|-----------------------------|--|
| CPU | MT7986 Quad-core, @2.0GHz |
| Memory / Storage | DDR4 1GB / eMMC 8GB |
| Wi-Fi | 802.11 a/b/g/n/ac/ax, 4x4 1148Mbps (2.4GHz) 802.11 a/b/g/n/ac/ax, 4x4 4804Mbps (5GHz) |
| External Antennas | 4 x 2.4GHz + 5GHz Dual Band Antennas |
| Ethernet Speed | WAN Port: 2 x 2.5G Ports (10/100/1000/2500Mbps) LAN Port: 4 x 1G Ports (10/100/1000 Mbps) |
| Power Consumption | <20W |
| Dimension / Weight | 233 x 137 x 53mm / 761g |
| SOFTWARE FEATURES | |
| Operating System | OpenWrt v21.02 |
| Network Mode | Router, Access Point, Extender, WDS |
| Ethernet Connection Methods | DHCP, Static IP, PPPoE |
| Repeater Mode | Scans and connects to SSID Connects to hidden SSID |

| | |
|-------------------------------|---|
| Wireless Configuration | Switching on and off wireless AP Modifying and hiding SSID Modifying encryption mode and password Channel modification Bandwidth modification Modifying transmission power Guest SSID |
| Firewall Function | Port forwarding, Open port, DMZ |
| VPN | OpenVPN client & server WireGuard client & server Maximum OpenVPN Speed: 880Mbps (with DCO support) Maximum WireGuard Speed: 900Mbps Policy routing |
| System Function | Change IP address range on LAN side Change time zone Custom MAC address Encrypted DNS Cloud remote management Remote manage via Cloud/DDNS |

| INTERFACE | |
|---------------|---|
| Ethernet Port | 1 x WAN, 5 x LAN |
| USB Port | USB3.0 Type-A + 5V/2A |
| LED Indicator | 1 x dual color LED indicator for Power and Internet |
| Reset Button | Press (>3s, <8s) restores network settings to device initial state Long press (>=8s) restores factory settings |
| Power Port | DC5521, 12V/4A (5.5*2.1mm) |

| CERTIFICATION | |
|--|--|
| <ul style="list-style-type: none"> • CE • RoHs • WEEE | <ul style="list-style-type: none"> • FCC • MIC • SRRC |

| ENVIRONMENT | |
|-----------------------|-------------------------|
| Operating Temperature | 0 ~ 40°C (32 ~ 104°F) |
| Storage Temperature | -20 ~ 70°C (-4 ~ 158°F) |
| Operating Humidity | 5%~95%, non-condensing |
| Storage Humidity | 5%~95%, non-condensing |

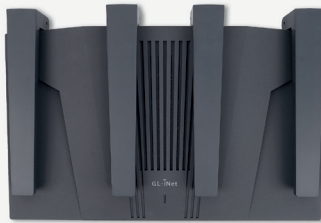
PACKAGE LIST

- 1 x GL-MT6000 Router
- 1 x Power Adapter
- 1 x Ethernet Cable
- 1 x User Manual & Warranty Card
- 1 x Converter
- 1 x Thank You Card

User manual



Flint 2 (GL-MT6000)



Thank you card



Ethernet cable



Power adapter



Converters
(Base on your shipping countries)



CONTACT US

GL TECHNOLOGIES (HONG KONG) LIMITED

Unit 601, Building 5W, Hong Kong Science Park, Shatin, N.T., Hong Kong

WEBSITE www.gl-inet.com | E-MAIL sales@gl-inet.com