

Datasheet (GL-SFT1200)

Meet Opal

- Security-savvy Travelers



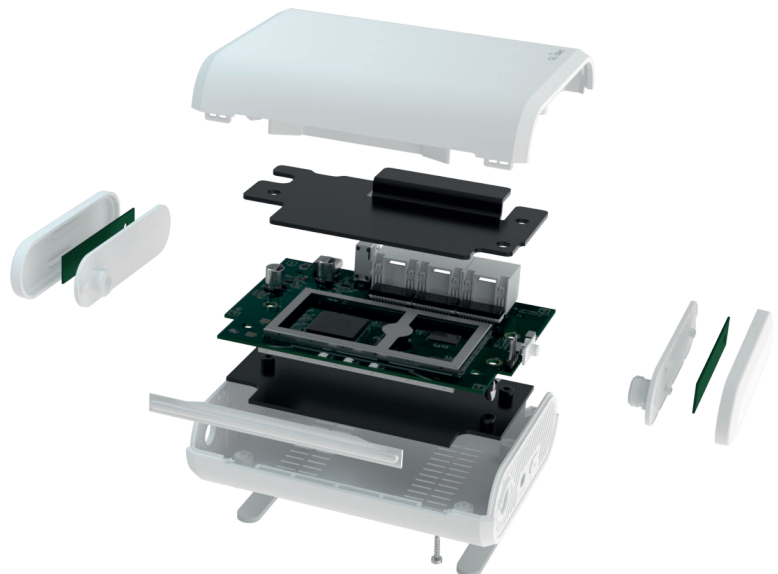
Opal (GL-SFT1200) is a budget-friendly travel router that offers 300Mbps (2.4GHz) + 867Mbps (5GHz) combined Wi-Fi speed. It is designed with low-cost and minimalist hardware components and compact with strong security features.

Opal is a user-friendly and convenient network security solution for frequent travelers and remote workforce to protect their network traffic when connected to an unknown Wi-Fi network.

Highlights

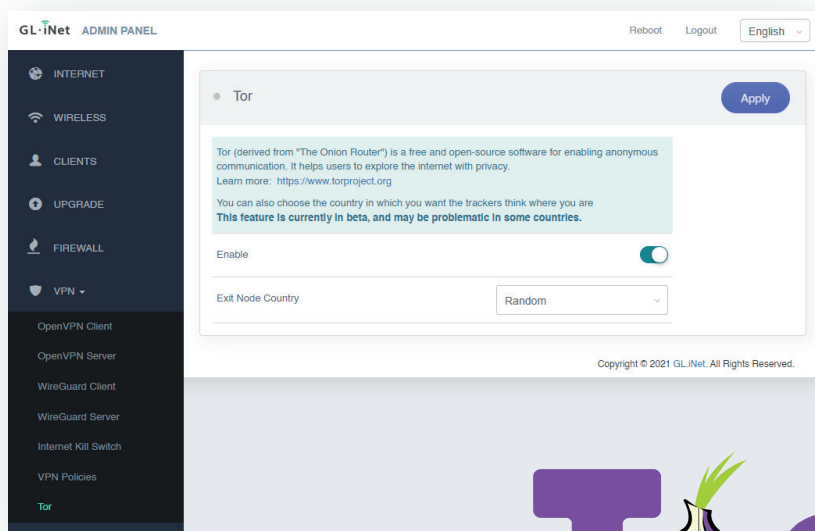
OpenWrt Pre-installed

Opal is pre-installed with customized OpenWrt operating system, letting users customize the router's firmware and install applications based on different application scenarios.



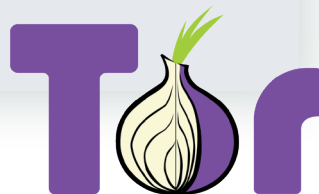
Secured Network

Opal is pre-installed with OpenVPN and WireGuard supporting 30+ VPN services, it supports VPN remote access to client devices using GoodCloud, and automatically encrypts all network traffic within the connected network. The network runs on the latest version of Internet Protocol IPv6, and it also supports Cloudflare DNS over TLS security protocol, ensuring a secure network.



Tor Service

Opal is pre-installed with Tor (The Onion Router). It protects sensitive personal information and browsing data by concealing online identity, defends against surveillance, and blocks third-party trackers.



Remote Device Management

Opal comes with GoodCloud, our remote device management platform for remote monitoring client device data usage, accessing the device's terminal, batch update, view analytics, and more.



Specifications

HARDWARE

CPU	SF19A28, Dual-Core, @1 GHz
Memory / Storage	DDR3 128MB / SPI NAND Flash 128MB
Wi-Fi	802.11 a/b/g/n, 300Mbps (2.4GHz) 802.11 ac, 867Mbps (5GHz)
External Antennas	2 x 2.4GHz + 5GHz two-in-one Wi-Fi Antennas
Ethernet Speed	10/100/1000 Mbps
Power Consumption	<6W
Dimension / Weight	118 x 85 x 30mm / 145g

SOFTWARE FEATURES

Operating System	OpenWrt
Network mode	Routing, AP, Wireless Bridge, Wired Bridge
Ethernet Dialing Mode	DHCP, Static, PPPoE
Repeater Mode	Scans and connects to SSID Connects to hidden SSID

<p>Wireless Configuration</p>	<p>Switching on and off wireless AP</p> <p>Modifying and hiding SSID</p> <p>Modifying encryption mode and password</p> <p>Channel modification</p> <p>Bandwidth modification</p> <p>Modifying transmission power</p> <p>Guest SSID</p>
<p>Firewall Function</p>	<p>Port forwarding, open port, DMZ</p>
<p>VPN</p>	<p>OpenVPN client & server</p> <p>WireGuard client & server</p> <p>Maximum OpenVPN Speed: 12Mbps</p> <p>Maximum WireGuard Speed: 65Mbps</p> <p>Policy routing</p>
<p>System Function</p>	<p>Restart</p> <p>Restore factory settings</p> <p>Change IP address range on LAN side</p> <p>Change time zone</p> <p>MAC address clone</p> <p>Advanced DNS</p> <p>Cloud remote management</p> <p>Remote web management</p> <p>Remote SSH management</p> <p>Installing / uninstalling packages</p>

INTERFACE

Ethernet Port	1 x WAN, 2 x LAN
USB Port	USB2.0 Type-A
LED Indicator	1 x dual color LED indicator for Power and Internet
Reset Button	Press (>3s, <8s) restores network settings to device initial state Long press (>=8s) restores factory settings
Power Port	USB Type-C interface, 5V/3A power supply

CERTIFICATION

- CE
- MIC
- WEEE
- IC
- FCC
- RoHs
- CCC

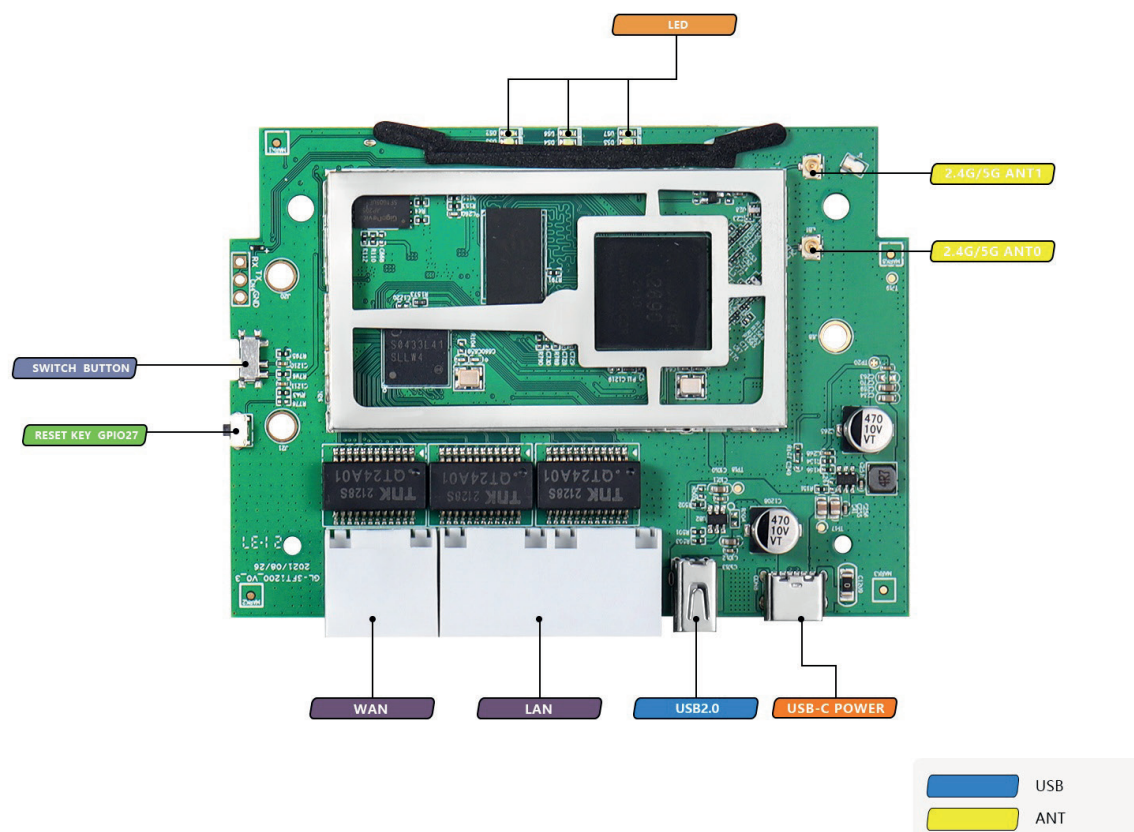
ENVIRONMENT

Operating Temperature	0 ~ 40°C (32 ~ 104°F)
Storage Temperature	-20 ~ 70°C (-4 ~ 158°F)
Operating Humidity	5%~95%, non-condensing
Storage Humidity	5%~95%, non-condensing

PACKAGE LIST

1 x Opal (GL-SFT1200) Router
1 x Power Adapter
1 x Ethernet Cable
1 x Warranty Card
1 x User Manual

PINOUT



CONTACT US

GL TECHNOLOGIES (HONG KONG) LIMITED

Unit 601, Building 5W, Hong Kong Science Park, Shatin, N.T., Hong Kong

WEBSITE www.gl-inet.com

E-MAIL sales@gl-inet.com