

OPENWRT ROUTERS FOR ALL PURPOSES

GL Technologies (Hong Kong) Limited, Designed for CES 2024 Las Vegas

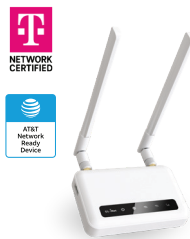
WEBSITE www.gl-inet.com | E-MAIL sales@gl-inet.com | PHONE +852 6930-5697 (9AM - 6PM, Monday - Friday)

Cellular (4G/5G) Routers & Gateways

GL-XE300 / GL-X750V2 / GL-X3000 / GL-XE3000 / GL-E750V2 / GL-X300B



Puli
GL-XE300



Spitz
GL-X750V2



Spitz AX
GL-X3000



Puli AX
GL-XE3000

SPECIFICATIONS

	Puli GL-XE300	Spitz GL-X750V2	Spitz AX GL-X3000	Puli AX GL-XE3000
CPU	Qualcomm, @650MHz	Qualcomm, @650MHz	MediaTek, Dual-core @1.3GHz	MediaTek, Dual-core @1.3GHz
Memory	DDR2 128MB	DDR2 128MB	DDR4 512MB	DDR4 512MB
Flash	16MB Nor + 128MB Nand	16MB Nor	8GB EMMC	8GB EMMC
Wireless Protocol	802.11 b/g/n	802.11 a/b/g/n/ac	802.11a/b/g/n/ac/ax	802.11a/b/g/n/ac/ax
Frequency	2.4GHz	2.4GHz, 5GHz	2.4GHz, 5GHz	2.4GHz, 5GHz
2.4GHz WiFi	300Mbps	300Mbps	574Mbps	574Mbps
5GHz WiFi	—	433Mbps	2402Mbps	2402Mbps
Ext. Antenna	Optional	2	6	6
Ethernet Port	1WAN, 1LAN	1WAN, 1LAN	1WAN, 1LAN	1WAN, 1LAN
Ethernet Speed	10/100Mbps	10/100Mbps	1x2.5G; 1xGE	1x2.5G; 1xGE
USB Port	USB 2.0	USB 2.0	USB 2.0	USB 2.0
Power Input	5V/2A	12V/1.5A	12V/2.5A (default adapter) / 24V	12V/2.5A
Power Consumption	<5W	<6W	<14W	<14W
Operating Temperature	0 ~ 40°C (32 ~ 104°F)	0 ~ 40°C (32 ~ 104°F)	0 ~ 40°C (32 ~ 104°F)	0 ~ 40°C (32 ~ 104°F)
Dimension / Weight	120*74*27 mm / 224g	115*74*22mm / 212g	155*95*36mm / 520g	155*95*49mm / 761g
MicroSD Slot	✓	✓	✓	✓
Built-in Nand Flash	✓	*	—	—
Built-in Battery	3.7V/5000mAh/18.5Wh	—	—	7.4V/6400mAh/47.4Wh
Cellular	4G LTE	4G LTE	4G LTE / 5G NR	4G LTE / 5G NR
Built-in BLE	*	—	*	—
Built-in THREAD	—	—	—	—
Built-in GPS	—	—	*	*

* Optional features / OEM available



Puli / GL-XE300

A portable IoT gateway featuring 4G LTE modem and a 5000mAh battery. Well-suited for business, travel, and DIY projects.

Spitz AX / GL-X3000

Dual-SIM 4G/5G cellular gateway supporting global carriers. Supports multi-WAN (failover and load balancing). Best for road trips and rural areas.



Mini Routers

GL-MT300N-V2 / GL-AR300M Series



mudi
GL-E750V2



Collie
GL-X300B



MANGO
GL-MT300N-V2



SHADOW
GL-AR300M Series

SPECIFICATIONS

CPU	Qualcomm, @650MHz	Qualcomm, @650MHz	MediaTek, @580MHz	Qualcomm, @650MHz
Memory	DDR2 128MB	DDR2 128MB	DDR2 128MB	DDR2 128MB
Flash	16MB Nor + 128MB Nand	16MB Nor	16MB Nor	16MB Nor
Wireless Protocol	802.11 a/b/g/n/ac	802.11 b/g/n	802.11 b/g/n	802.11 b/g/n
Frequency	2.4GHz, 5GHz	2.4GHz	2.4GHz	2.4GHz
2.4GHz WiFi	300Mbps	300Mbps	300Mbps	300Mbps
5GHz WiFi	433Mbps	—	—	—
Ext. Antenna	0	3	0	Optional
Ethernet Port	1WAN/LAN [*]	1WAN, 1LAN	1WAN, 1LAN	1WAN, 1LAN
Ethernet Speed	10/100Mbps	10/100Mbps	10/100Mbps	10/100Mbps
USB Port	USB 2.0	—	USB 2.0	USB 2.0
Power Input	5V/2A	12V/1A	5V/2A	5V/2A
Power Consumption	<6W	<4W	<2.75W	<2W
Operating Temperature	0 ~ 35°C (32 ~ 95°F)	-20 ~ 55°C (-4 ~ 131°F)	0 ~ 40°C (32 ~ 104°F)	0 ~ 40°C (32 ~ 104°F)
Dimension / Weight	145*77*23mm / 285g	104*113*28mm / 235g	58*58*25mm / 40g	58*58*25mm / 40g
MicroSD Slot	✓	—	—	—
Built-in Nand Flash	✓	—	—	—
Built-in Battery	3.7V/7000mAh/25.9Wh	—	—	—
Cellular	4G LTE	4G LTE	—	—
Built-in BLE	—	—	—	—
Built-in THREAD	—	—	—	—
Built-in GPS	—	—	—	—

^{*}supported with the docking station



Mudi / GL-E750V2

A portable 4G LTE travel router compatible with global carriers. Equipped with a built-in battery. Offers full open-source capability with OpenWrt and multi-WAN (failover and load balance).

Mango / GL-MT300N-V2

Portable mini wireless router suitable for DIY projects. Easy to install into any device and affordable for mass deployment. Also ideal as a travel router.



Travel Routers

GL-SFT1200 / GL-A1300 / GL-AXT1800 / GL-MT3000



Opal
GL-SFT1200



Slate Plus
GL-A1300



Slate AX
GL-AXT1800



Beryl AX
GL-MT3000

SPECIFICATIONS

	Opal GL-SFT1200	Slate Plus GL-A1300	Slate AX GL-AXT1800	Beryl AX GL-MT3000
CPU	Siflower, Dual-core @1GHz	Qualcomm, Quad-core @710MHz	Qualcomm, Quad-core @1.2GHz	MediaTek, Dual-core @1.3GHz
Memory	DDR3 128MB	DDR3L 256MB	DDR3L 512MB	DDR4 512MB
Flash	128MB SPI Nand	4MB Nor + 128MB Nand	128MB Nand	256MB Nand
Wireless Protocol	802.11a/b/g/n/ac	802.11a/b/g/n/ac	802.11a/b/g/n/ac/ax	802.11a/b/g/n/ac/ax
Frequency	2.4GHz, 5GHz	2.4GHz, 5GHz	2.4GHz, 5GHz	2.4GHz, 5GHz
2.4GHz WiFi	300Mbps	400Mbps	600Mbps	574Mbps
5GHz WiFi	867Mbps	867Mbps	1200Mbps	2402Mbps
Ext. Antenna	2	2	2	2
Ethernet Port	1WAN, 2LAN	1WAN, 2LAN	1WAN, 2LAN	1WAN, 1LAN
Ethernet Speed	10/100/1000Mbps	10/100/1000Mbps	10/100/1000Mbps	1x2.5G; 1xGE
USB Port	USB 2.0	USB 3.0	USB 3.0	USB 3.0
Power Input	5V/3A	5V/3A	5V/4A	5V/3A
Power Consumption	<6W	<6.5W	<8.75W	<6.5W
Operating Temperature	0 ~ 40°C (32 ~ 104°F)	0 ~ 40°C (32 ~ 104°F)	0 ~ 40°C (32 ~ 104°F)	0 ~ 40°C (32 ~ 104°F)
Dimension / Weight	118*85*30mm / 145g	118*85*30mm / 181g	125*82*36mm / 245g	106*83*33mm / 196g
MicroSD Slot	—	—	✓	—
Built-in Nand Flash	✓	✓	✓	✓
Built-in Battery	—	—	—	—
Cellular	—	—	—	—
Compatible with M2 Dev Board	—	—	✓	✓



Slate AX / GL-AXT1800

Sleek, palm-sized Wi-Fi 6 router with superior Wi-Fi speeds and VPN speeds. Suitable for home and travel.

Beryl AX / GL-MT3000

Best-value compact wireless router on the go. Ultra-fast Wi-Fi speeds and VPN speeds. Equipped with 2.5G multi-gigabit WAN port for stable and powerful performance.



Security Gateway / Home Routers

GL-MT2500 / GL-MT2500A / GL-AX1800 / GL-MT6000 / GL-B3000



BRUME 2

GL-MT2500 / GL-MT2500A



Flint

GL-AX1800



Flint 2

GL-MT6000



Marble

GL-B3000

SPECIFICATIONS

CPU	MediaTek, Dual-core @1.3GHz	Qualcomm, Quad-core @1.2GHz	MediaTek, Quad-core @2GHz	Qualcomm, Dual-core @1GHz
Memory	DDR4 1GB	DDR3L 512MB	DDR4 1GB	DDR3L 512MB
Flash	8GB EMMC	128MB Nand	8GB EMMC	128MB Nand
Wireless Protocol	—	802.11 b/g/n/ac/ax	802.11a/b/g/n/ac/ax	802.11a/b/g/n/ac/ax
Frequency	—	2.4GHz, 5GHz	2.4GHz, 5GHz	2.4GHz, 5GHz
2.4GHz WiFi	—	600Mbps	1148Mbps	574Mbps
5GHz WiFi	—	1200Mbps	4804Mbps	2402Mbps
Ext. Antenna	—	4	4	—
Ethernet Port	1WAN, 1LAN	1WAN, 4LAN	1WAN, 5LAN	1WAN, 1WAN/LAN, 1LAN
Ethernet Speed	1x2.5G; 1xGE	10/100/1000Mbps	2x2.5G; 4xGE	10/100/1000Mbps
USB Port	USB 3.0	USB 3.0	USB 3.0	—
Power Input	5V/2A	12V/1.5A	12V/4A	12V/1.5A
Power Consumption	<3.5W	<18W	<20W	<10W
Operating Temperature	0 ~ 40°C (32 ~ 104°F)	0 ~ 40°C (32 ~ 104°F)	0 ~ 40°C (32 ~ 104°F)	0 ~ 40°C (32 ~ 104°F)
Dimension / Weight	70*70*24mm / 60g 157g	210*120*36.8mm / 445g	233*137*53mm / 761g	155*120*23mm / ~295g
MicroSD Slot	—	—	—	—
Built-in Nand Flash	—	✓	—	✓
Built-in Battery	—	—	—	—
Cellular	—	—	—	—
Compatible with M2 Dev Board	✓	✓	✓	—



Flint 2 / GL-MT6000

Flint 2 boasts superior Wi-Fi speeds and WireGuard speeds (up to 900Mbps). Built on OpenWrt for your full control and customization.

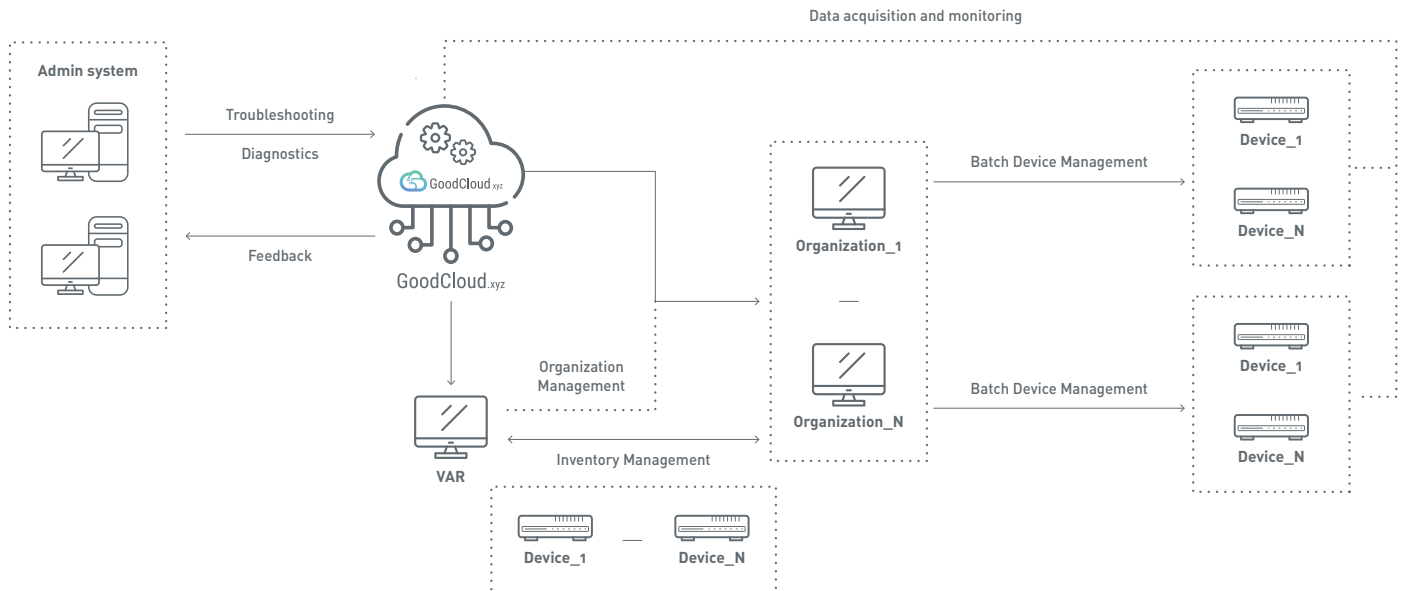
Marble / GL-B3000

Marble boasts a thin and minimalistic design, with a clean and white appearance that will blend in with any environment. It features VPN and parental controls to keep you and the family protected.



GoodCloud.xyz

GL.iNet's cloud remote device management platform designed to provide network oversight for Wi-Fi and IoT network devices, and streamline device management and maintenance procedures.



Inventory and Batch Device Management

Value-added resellers (VARs) can deliver and refund the devices from their different customers, and view inventory information in a dedicated dashboard for each customer.

The Template & Bulk Action feature facilitates batch management and device configuration, significantly reducing repetitive tasks.

Customer and Organization Management

VARs can establish and oversee organizations across multiple levels, and set restrictions for certain users to access data only within their enterprise.

As all registered IoT devices can remotely access the device web admin panel via the remote SSH function, VARs can offer customers device diagnostics and troubleshooting.

Branded Customization

The device's firmware is customizable with icons, logo, company name, copyright, and link to the official website of the device's management panel. There are more customization settings via Platform Information, UI customization, Email Settings, and Email Templates, allowing VARs to build a strong brand presence.

Reduce Cost and Foster Informed Decisions

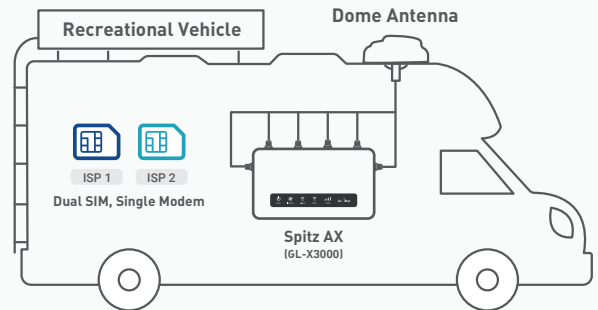
With GoodCloud, VARs can save costs in developing and maintaining their own platform. Data is displayed in an intuitive manner within the dashboard, allowing VARs to get key insights instantaneously and make sound business decisions.

Application Scenarios

GL.iNet's products and services are adaptable to a wide array of scenarios and industries.

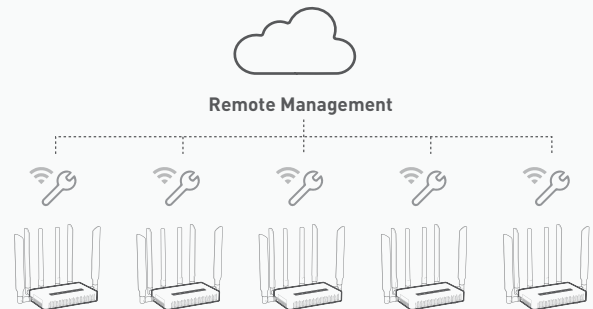
Cellular Connectivity For Recreational Vehicles

Maintain a reliable and uninterrupted network on RVs under rural areas with minimal access to network infrastructure.



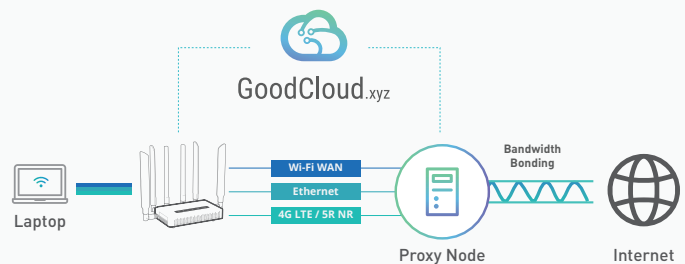
Remote Technical Support for Home & Office Routers

Simplifying support service by remote accessing the device's admin panel or terminal via SSH under GL.iNet's cloud remote device management platform.



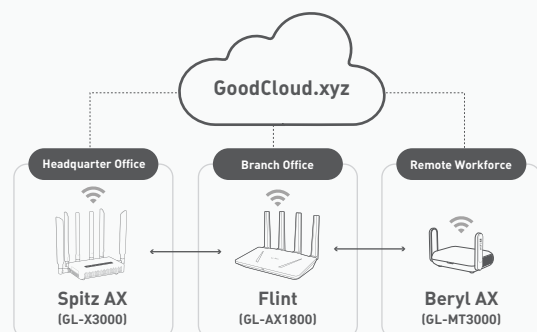
Bandwidth Bonding for Faster Speeds

Bandwidth bonding combines cellular signal, Wi-Fi repeater, and Starlink connection into one data pipe to offer faster internet speeds. It is useful in bandwidth-constrained situations, such as moving vehicles and remote areas.



SD-WAN Solution for Multi-offices and Remote Workforce

Using GL.iNet's routers and cloud remote device management platform to establish a secure LAN network for multiple offices and remote workforce.



Company Overview

Our vision is to empower families and businesses worldwide with smarter lifestyles. We have assembled a global team of experts to develop innovative hardware and software that delivers cost-effective, dependable, and secure network connectivity. GL.iNet assists a diverse range of companies, from startups to multinational corporations, to seamlessly adapt their network infrastructure for growth by offering Wi-Fi & IoT connectivity, network security, and remote device management solutions.

Service Portfolio

Wi-Fi and IoT Network Solutions

With 12 years of network solution experience, we are a leading provider of OpenWrt Wi-Fi routers, IoT gateways, and remote device management platforms. Our cutting-edge solutions are utilized in over 128 countries, solidifying our reputation as a trusted provider on a global scale.



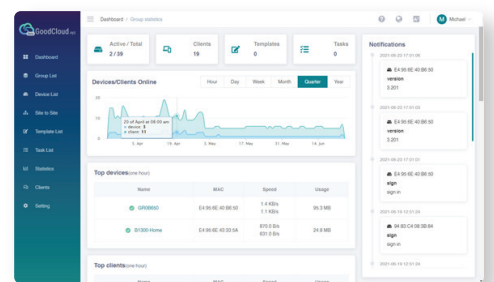
Quality Network Hardware Manufacturing

Our proven continuous success in design and manufacturing guarantees the superior quality of our hardware and software. We operate our own manufacturing facility to ensure the stringent quality standards are met and exceeded.



Cloud Device Management Solutions

GL.iNet's routers and gateways come with our remote device management platform, featuring remote monitoring, batch configuration, firmware updates, and network analytics.



White Label Service

Our hardware and software is customizable and can be rebranded to suit our partners' needs. Our expertise in design and manufacturing ensures a smooth integration of our solutions into our partners' existing services or operating environments.

